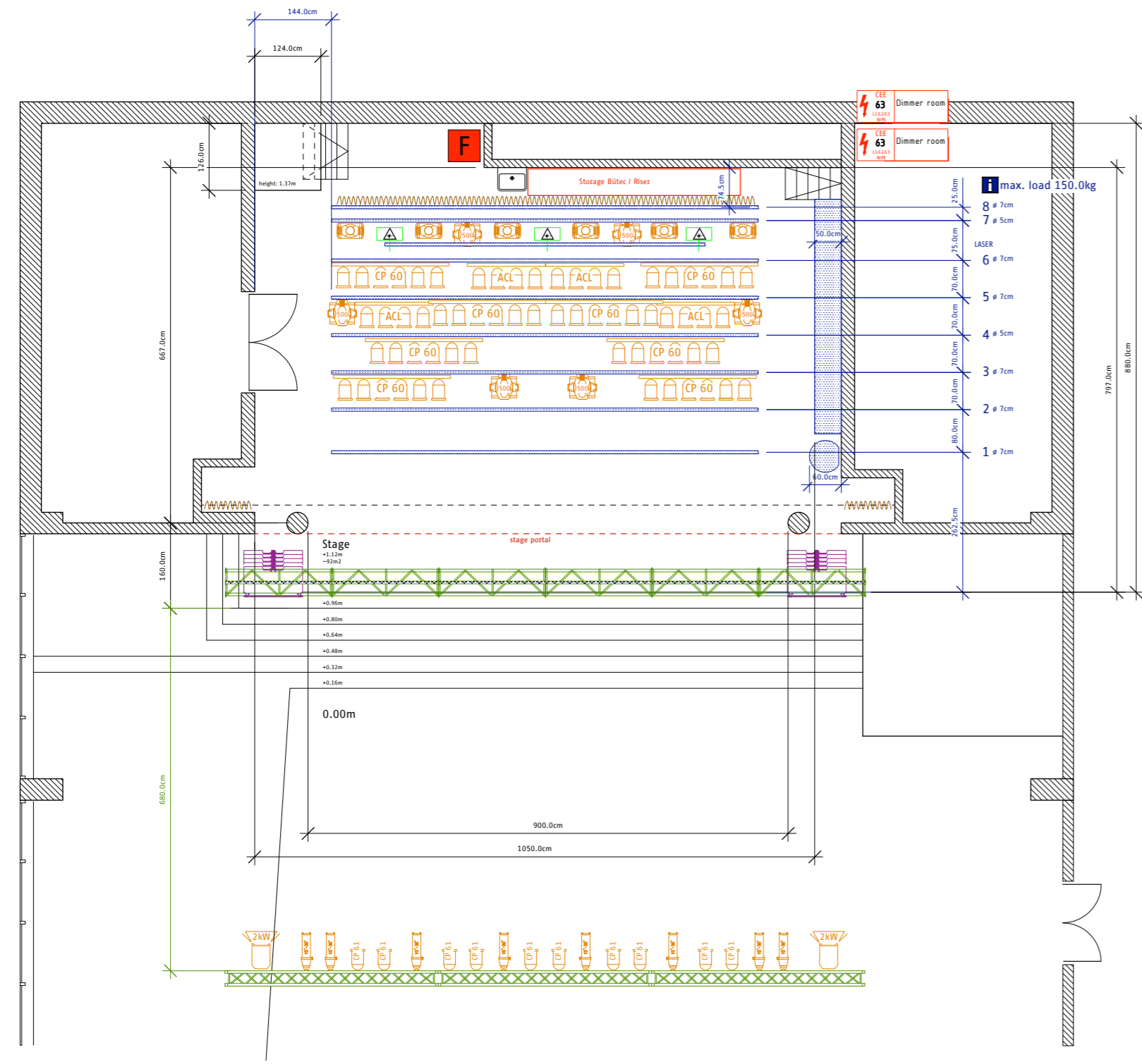
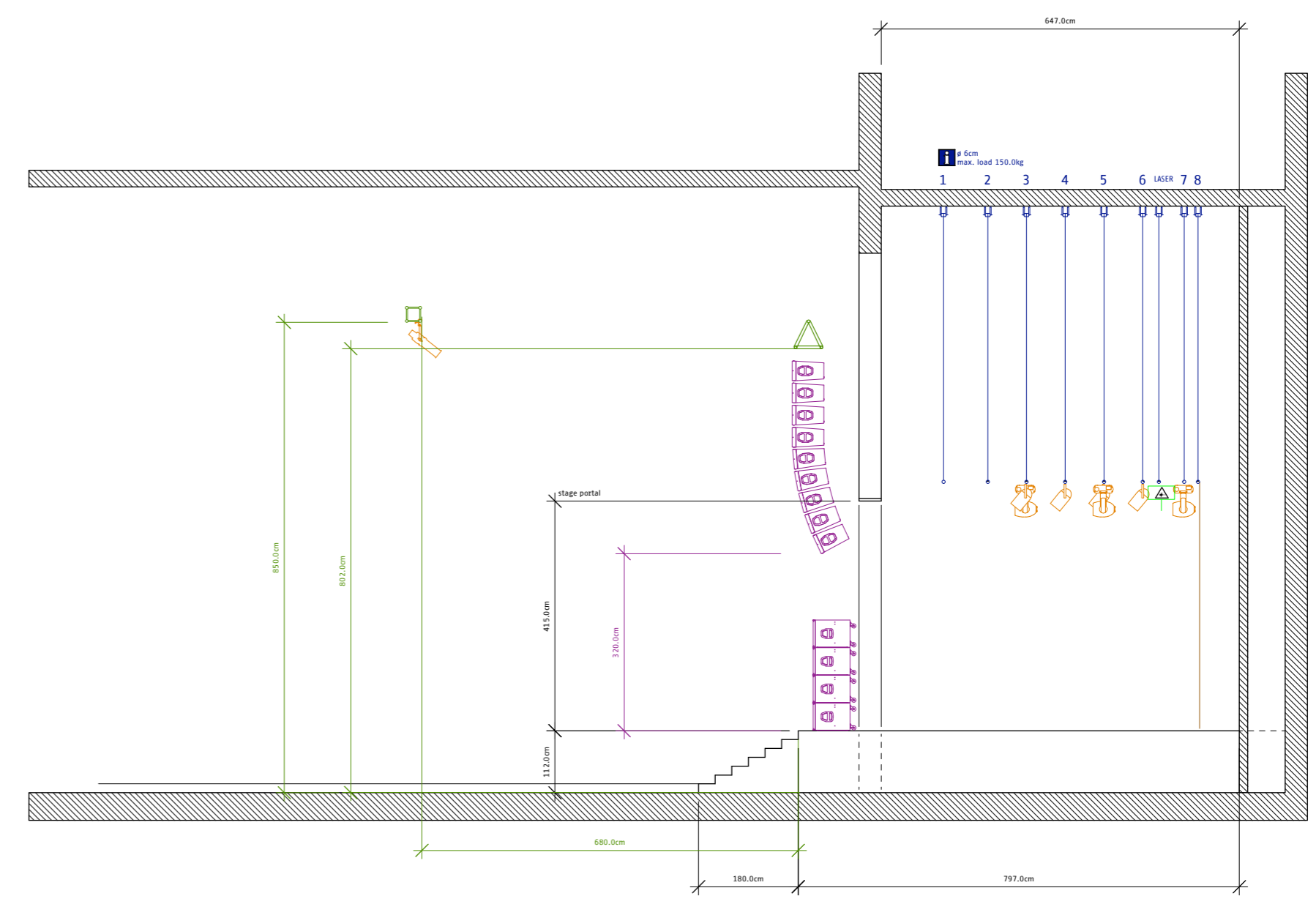


TOP



SIDE



Stk.	Bezeichnung
8	Par 64 6Bar, CP60
4	Par 64 4Bar, ACL
2	Fresnel 2000W
8	Profilier ETC 54 15-30°, 750W
10	Par 64 CP61, 1000W
6	Martin Mac 500, spot
6	High end studio beam
3	Laser

Projekt: X-tra Club	Drawing title: Stageplan top / side view	Date event:	Plan N°: 2.01	Scale: 1:100	Plan format: A2	
Customer:	Drawn by: luc, designlight	Drawing Date: 24.04.2009	Revisions:	Sign:	Changes:	
<p>Club X-tra Limmatstrasse 118 CH - 8031 Zürich info@x-tra.ch www.x-tra.ch</p> <p>Tel.: +41 (0)44 448 15 00 Fax: +41 (0)44 448 15 01</p>	Project manager:	Tel.:				
		mobile:				
		Email:				